



Bathing establishment Fact Sheet

Bathhouse name	ONDA BLU
Address	VIA LUNGOMARE DI PONENTE, 40
City	MARINA DI MASSA (MS)
Contacts	+39 338 6129715
Website	binbin50@hotmail.com

TESTED BY: [Handy Superabile - Social Promotion Association](#) in summer 2023

Please note The following information refers to the verification date shown at the bottom of each card. **The Association** is not responsible for any significant changes made by the property after the visit.

Summary

Bathing establishment Fact Sheet	1
Arrival at the facility	2
Private/public parking.....	2
Pathway from the parking lot to the main entrance	2
Reception.....	3
Bar/restaurant	4
Internal Pathways and common services.....	5
Internal Pathways	5
Toilet and shower accessible to guests with reduced mobility	5
Changing room	7
Beach.....	7
Children's play area	8
Swimming pool	9
Doctors' Offices/Healthcare Facilities	9

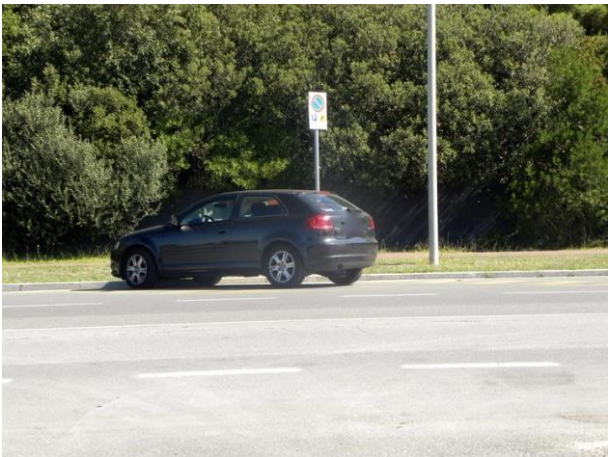
Project carried out with the contribution of the





Arrival at the facility

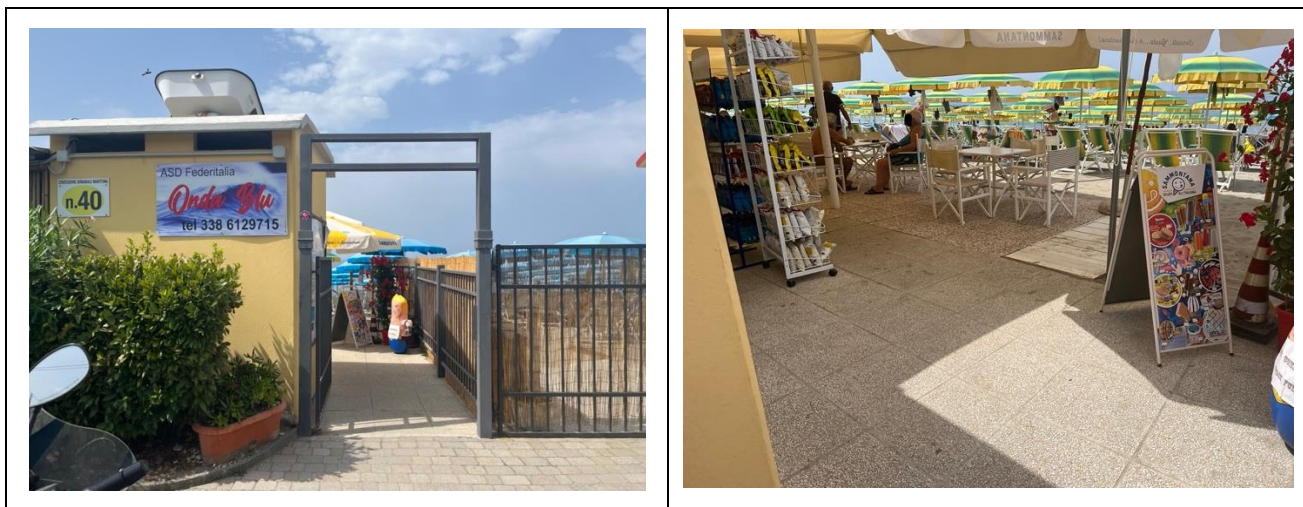
Private/public parking

Presence of private parking	NO
Type of private car park	Not present
Presence of parking space reserved for people with disabilities	NO
Public parking nearby	YES with n.1/2 places reserved for the disabled at approx. 50/100 meters
Type of public car park	asphalt
	<p>Public parking reserved for people with disabilities</p>

Pathway from the parking lot to the main entrance

Pathway from the car park to the entrance	From the public car park via connecting ramps from the road surface to the sidewalks. The entrance is accessible on a level level
There are markers and tactile maps	NO
Usable door/entrance width	more than 90 cm





Reception

Umbrella booking system	<input type="checkbox"/> Via web <input checked="" type="checkbox"/> By phone <input checked="" type="checkbox"/> On-site
Presence of multilingual staff	YES
Presence of plant plan with key to services available	NO
Presence of visuo-tactile map	NO
Bulletin board/information panels at an average height of 130 cm in a well-lit area and font size at least 14 dpi with a contrast ratio greater than 4.5:1	NO
The staff attended training courses on welcoming people with different disabilities	NO





Bar/restaurant

Type of venue	Snack bar
Access to the premises	Flat
Usable door/entrance width	more than 90 cm
Bar counter	more than 100 cm
Types of tables	Central intersection
Space underneath the tables from the floor	65 cm
Multilingual menu	NO
Menus with large print fonts	NO
Braille menu	NO
Table service for people with disabilities	YES
Availability of gluten-free food	<input type="checkbox"/> bread <input type="checkbox"/> pasta <input type="checkbox"/> biscuits <input checked="" type="checkbox"/> ice cream <input type="checkbox"/> Pre-packaged foods





Internal Pathways and common services

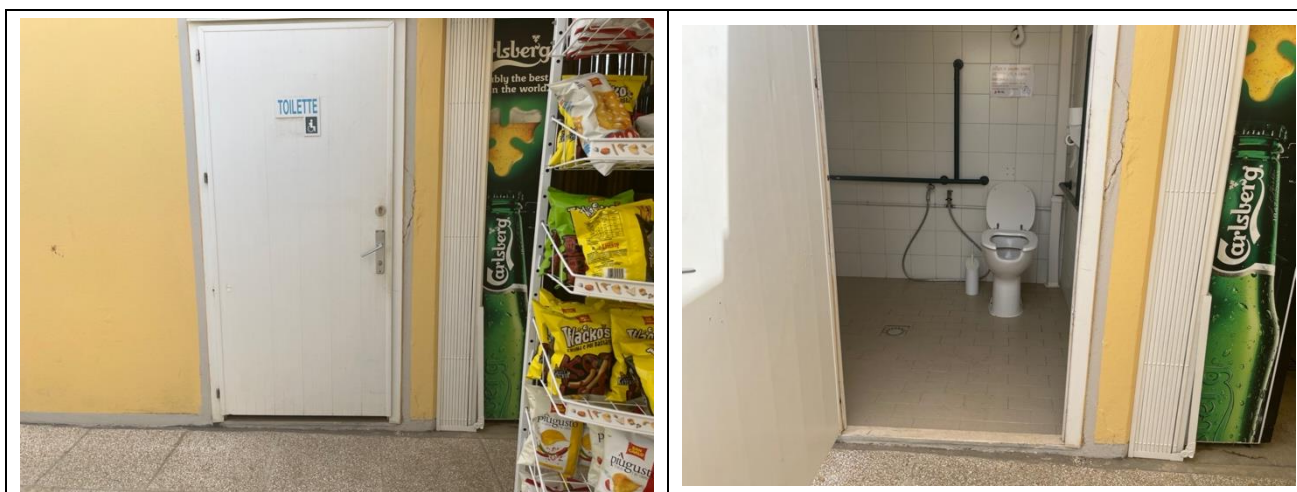
Internal Pathways

Indicate whether the pathways connecting the entrance to the beach are flat or with ramps in addition to those already described	Obstacle-free paths
--	---------------------

Toilet and shower accessible to guests with reduced mobility

Number of toilets accessible/usable by guests with reduced mobility	1
Access to the premises	overcoming the door knocker step height 6 cm
Usable width of the entrance door	85 cm
Toilet height	50 cm
Open front toilet seat	YES
Support handles	on both sides
Flexible hand shower at the side of the toilet	YES
Free space on the sides of the toilet	left 25 Cm right more than 90 cm frontal more than 90 cm
Electric doorbell/phone	YES
Washbasin with space underneath for wheelchair	60 cm
Height from the ground on the bottom edge of the mirror	128 cm
Baby changing table	NO





Accessible shower available for guests with reduced mobility	Yes outdoor without canopy
Access to the shower room if separated from the toilet room	Flat
Useful width of the door/entrance gate if separated from the toilet room	more than 90 cm
Shower type	open-type
Floor-level shower	NO with 25 cm high step
Shower chair	missing
Grab bar	missing
Presence of shower head or ups and downs	fixed shower head

Project carried out with the contribution of the





Electric doorbell/phone	NO
	

Changing room

Accessible changing room available for guests with reduced mobility	NO
---	----

Beach

Type of beach	sand
Access to the beach	Flat
Walkway to reach the umbrellas	YES
Type of walkway	cement
Walkway width	90 cm





<p>Removable Platform between the walkway and the umbrella station to facilitate the passage and parking wheelchair</p>	<p>YES</p>
<p>Amphibious beach chair available for helping people with reduced mobility to enjoy swimming (owned by the establishment or by association)</p>	<p>YES</p>

Children's play area

<p>Children's play area</p>	<p>inaccessible to children with reduced mobility due to sandy bottom</p>
<p>There are games for children with reduced mobility</p>	<p>NO</p>





Children's play area

Swimming pool

The property has a swimming pool	NO
----------------------------------	----

Doctors' Offices/Healthcare Facilities

Hospitals near the facility	NOA NUOVO OSPEDALE APUANE Via Enrico Mattei, 2 54100 Marina di Massa MS Tel.: +39 05854931
Other Healthcare Facilities	Località Partaccia Via delle Pinete 197/b Marina di Massa Tel.: +39 33581617

TESTED BY: **Handy Superabile Social Promotion Association in summer 2023**

